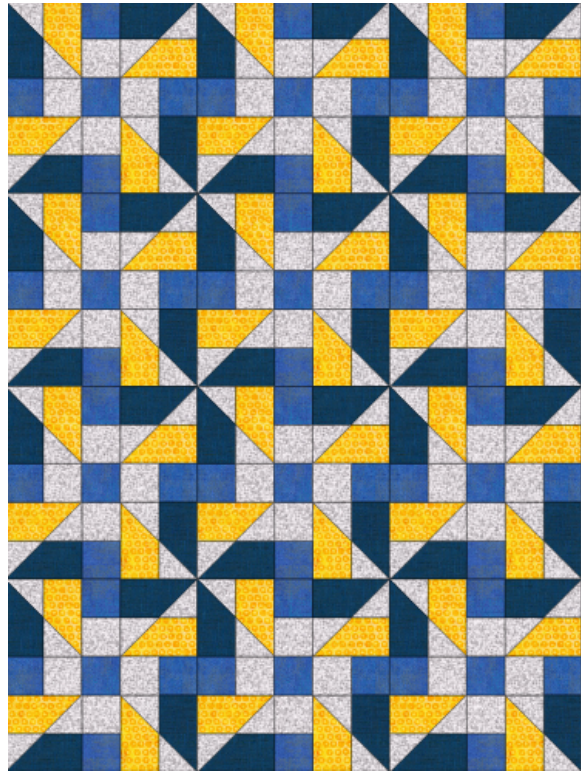


**Clue 16:**

Use Block 3 in a three by four layout to make the center of the quilt.



**Clue 17:**

Join four of Block 1 (make two of these rows).

Join five of Block 1 (make two of these rows).

Because you pressed both long seams in the same direction, you can turn every other block and end up with many (but not all) meshed seams allowances.

Measure the length of a five block row from raw edge to raw edge and the length of a four block row.

Record those measurements here:

Five blocks \_\_\_\_\_ Four blocks \_\_\_\_\_

